

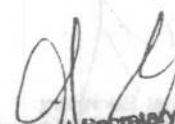
16

SPECIFICATION FOR DOUBLE DECKER COT FOR HOSTEL BOARDERS

1.	SCOPE	The specification covers designs, dimensions, materials, manufacture and finish of Double Decker Cot for Hostel Boarders upto class 10 th .	
2.	MATERIALS	The materials used in different components shall confirm to the quality prescribed in relevant IS specification or equivalent specification.	
		i) Frame – (Head end and foot end)	<p>Legs shall be manufactured from 50 X 50 X 2.90 M.S. hollow square tube.</p> <p>Two nos. of tubes joining two legs at each end shall be manufactured from 50 X 50 X 2.90mm M.S. hollow square tube.</p> <p>Other filling tubes shall be made from 25 X 25 X 1.25mm M.S hollow square tube.</p>
		ii) Bed Frame	Shall be manufactured from 50.8 x 25.4 x 2.9 mm hollow rectangular M.S. tube.
		iii) Stiffener in Bed Frame	Shall be made out of 25 x 25 x 1.25 mm M.S. hollow square tube.
		iv) Ladder	Shall be made out of 25 X 25 X 1.25mm M.S. hollow square tube.
		v) Corner joint (Frame & Bed)	Shall be fabricated from 30 x 30 x 5 mm M.S. angle and Square bar of 10mm size.
		vi) Mosquito net Pole Support	Shall be made from 19 mm OD, 1.25 mm thick M.S. Tube.
		vii) Mosquito Net Pole	Shall be made from 13.5 mm OD, 1.25 mm thick M.S. Tube of 3 ft. length .
		viii) Leg shoes	PVC shoes with nominal height 35 mm minimum.
		ix) Nut & Bolt	ISI marked M-12 X 50 mm size galvanized
		x) Bed	ISI marked Ply wood , 19mm thick , conforming to IS: 303 Size – 72" X 30"- 2nos.
		xi) Side support guard in top bed frame	Shall be made from 25mm OD, 1.25 mm thick M.S tube

(Each bed 11)
De. retar a cot
at handour a cot
to amtes cot
D/20

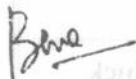
Bao

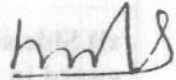

 Principal Secretary
 ST & SC Development and
 Minorities & Backward Classes
 Welfare Department




3.	DESIGN AND DIMENSIONS	As per drawing at Annexure - 1,2,3 & 4 Tolerance on dimensions :- i) Linear dimension : ± 5 mm ii) Tolerance of Materials - May be referred to relevant materials IS: specification.
4.	MANUFACTURE	Supporting frames at foot and head ends, bed frame and ladder shall be fabricated separately. The bed frame shall be joined to the supporting frames at foot and head ends with the help of two nos. of M-12 X 50mm size galvanized nut bolt at each corner on angular support fabricated out of M.S. Angle 30 x 30 x 5 mm of 100 mm leg length welded to each leg. There should be a ladder shall be fixed to the frame at the foot end with the help of M.S. Square tube 25 x 25 x 1.25 mm. The top end of the M.S. square tube used in each leg shall be closed with the help of M.S. sheet / plate and bottom shall be fixed with PVC shoes. Four nos. of stiffeners made out of 25 x 25 x 1.25 mm M.S. square hollow tube shall be welded in the bed frame at a spacing as mentioned in the drawing for providing support to bed. It should be fixed in such a way that the bed top shall match to bed frame top. Side support guard shall be provided in the top bed frame fabricated from 25mm OD , 1.25 mm thick M.S round pipe as per drawing. Mosquito net provision: On the four corners of the bed, provision shall be made for installing the mosquito net. For this purpose two pieces each of 100 mm length and 19 mm dia M.S. tube shall be welded at a distance of 100 mm on each leg from the top. Lower end of the M.S. tube shall be closed for holding the mosquito net pole of 13.5 mm OD M.S. tube of 3 ft length.
5.	FINISH -	Welding should be all along the joint and finished smooth. All the steel components shall be finished smooth and coated with two coats of synthetic enamel paints as per the colour specified by the purchaser over an application of one coat of metal primer. Painting shall be uniform in colour.

N.B. : The specification should be read with the drawing, design and dimension.

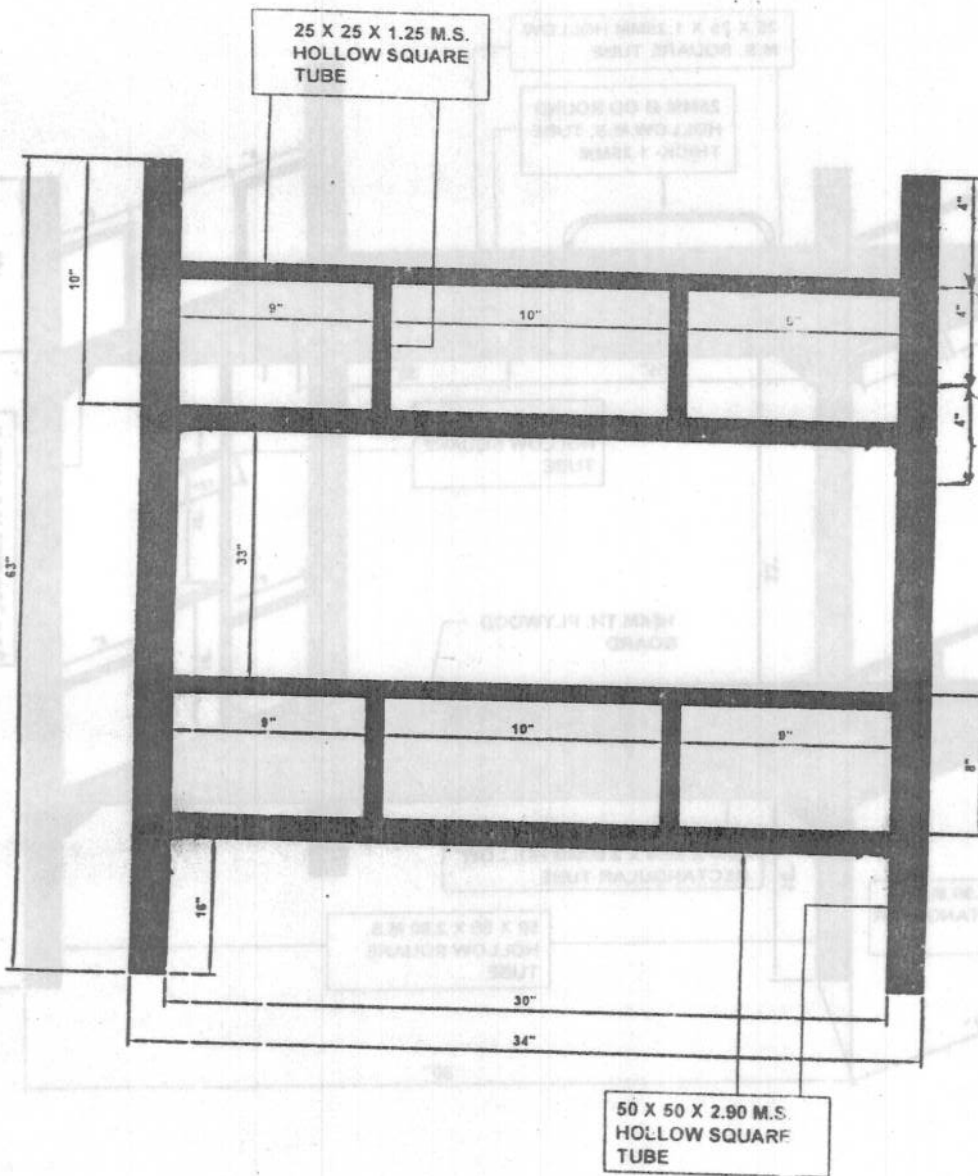

Asst. Engineer
I.T.D.A, Nilgiri


Joint Director (I) I/C
EP&M


Principal Secretary
ST & SC Development and
Minorities & Backward Classes
Welfare Department

DRAWING, DESIGN AND SPECIFICATIONS OF DOUBLE DECKER COT FOR HOSTEL BOARDERS

2



HEAD END

(FRAME)

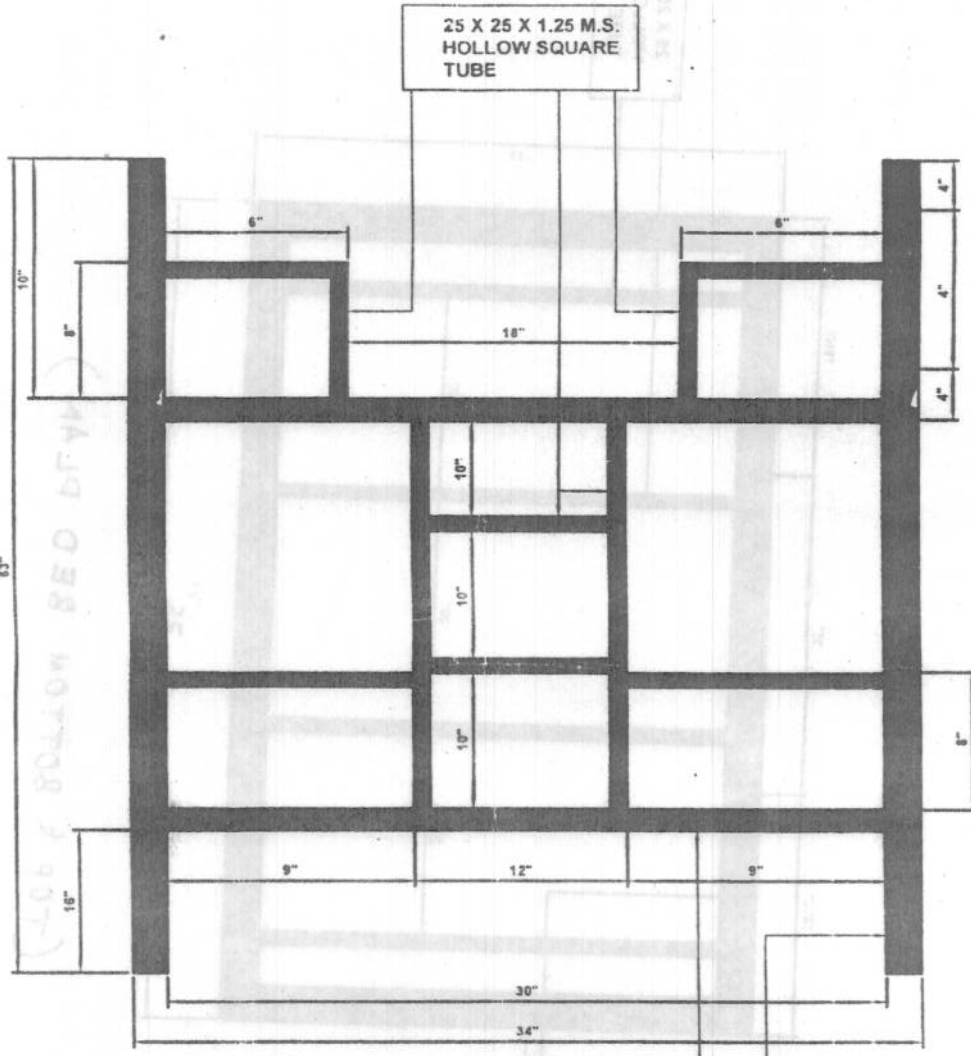
Bone

g

Assistant Engineer

Joint Director (I) VC
EP & M

DRAWING, DESIGN AND SPECIFICATIONS OF DOUBLE DECKER COT FOR HOSTEL BOARDERS



25 X 25 X 1.25 M.S.
HOLLOW SQUARE
TUBE

50 X 50 X 2.90 M.S.
HOLLOW SQUARE
TUBE

FOOT END
(FRAME)

Handwritten signature

Handwritten signature

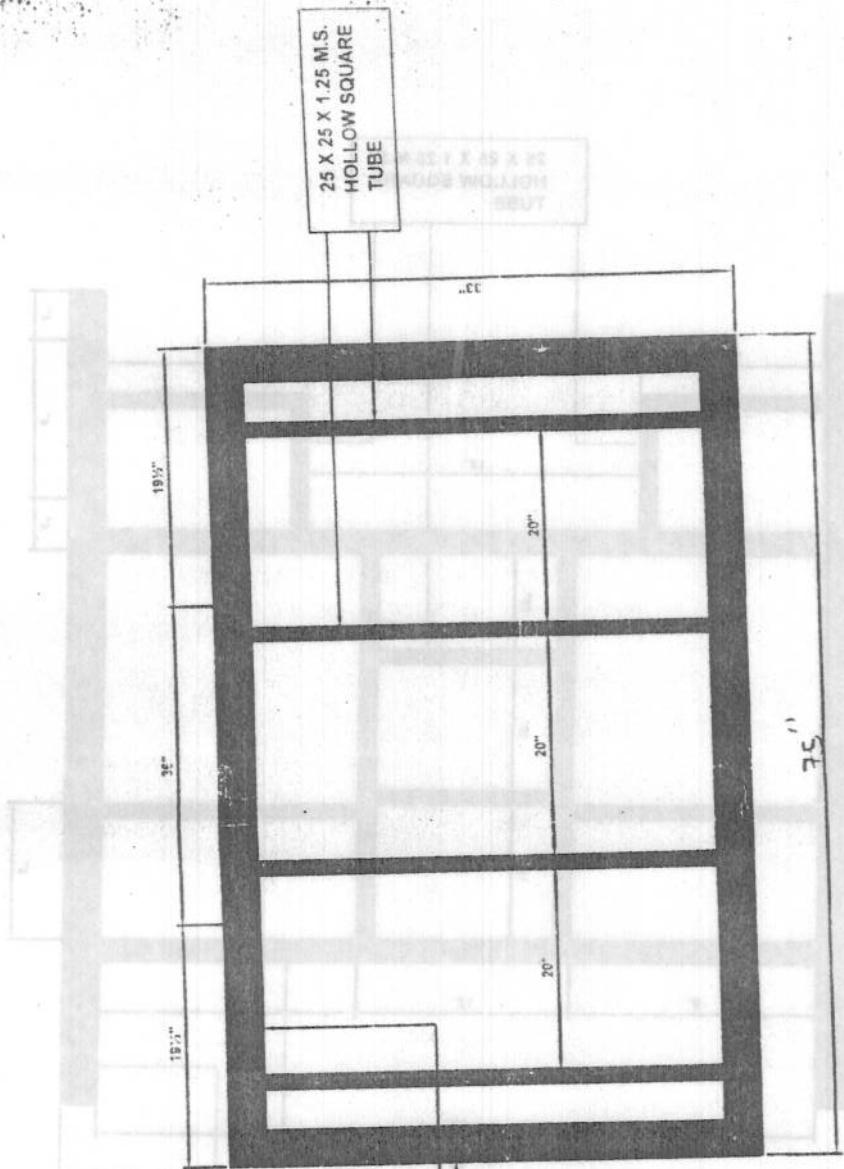
Handwritten signature

DOUBLE DECKER COT FOR HOSTEL BOARDERS
DRAWING, DESIGN AND SPECIFICATIONS OF

**DRAWING, DESIGN AND SPECIFICATIONS OF
DOUBLE DECKER COT FOR HOSTEL BOARDERS**

ANNEXURE

DRAWING, DESIGN AND SPECIFICATIONS OF
DOUBLE DECKER COT FOR HOSTEL BOARDERS



(TOP & BOTTOM BED PLAN)

hms

hms

hms

hms

hms